



## Compact 5-Port Gigabit Switch

Powered by 802.3af/at PoE or USB Type C

Compact Desktop Footprint

Energy-Efficient Design

Model: USW-Flex-Mini



## Overview

Expand your network with the UniFi<sup>®</sup> Switch Flex Mini, part of the Ubiquiti<sup>®</sup> UniFi Enterprise System.

### Compact Desktop Design

The cost-effective UniFi Switch Flex Mini can be discreetly integrated into any environment.

### Copper Connectivity

Five RJ45 ports offer 10/100/1000 links. One port also supports 802.3af/at PoE input.

### Efficient Use of Energy

The UniFi Switch Flex Mini uses only a maximum of 2.5W.

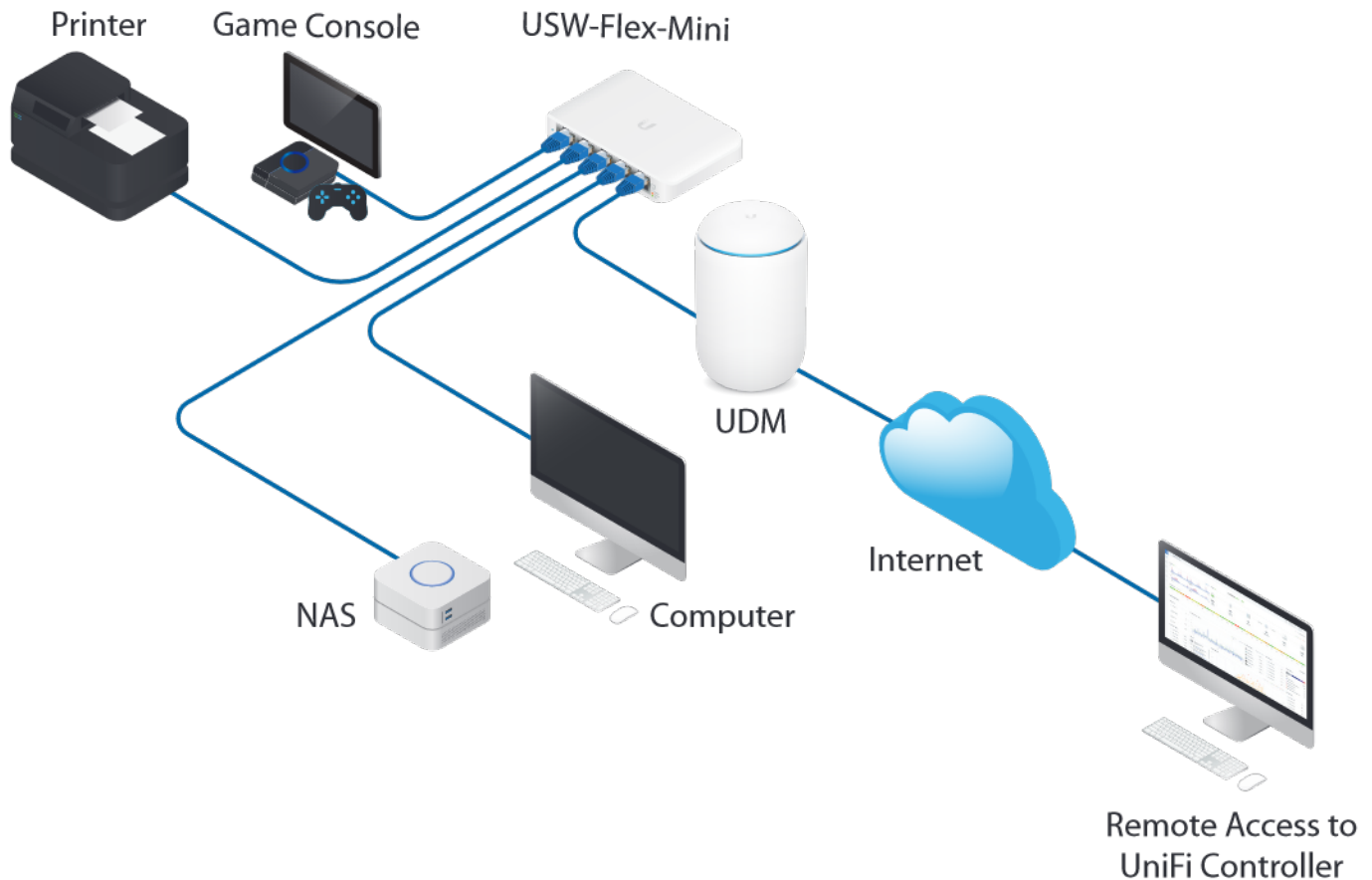
For your convenience, it can be powered by 802.3af/at PoE or a 5V, 1A USB-C power adapter\*.

### Switching Performance

The UniFi Switch Flex Mini offers the forwarding capacity to simultaneously process traffic on all ports at line rate without any packet loss.

\* Included only with the single-pack of the USW-Flex-Mini.

## Deployment Example



*The UniFi Switch Flex Mini connects a variety of devices, including a printer, game console, NAS, and computer.*



## Scalable UniFi Network Controller

### Management Capabilities

The UniFi Network™ Controller can provision UniFi devices, map out networks, and quickly manage system traffic. Important network details are logically organized for a simplified, yet powerful, interface.

### Network Overview

From a single pane of glass, view network topology and configuration, real-time statistics, and debugging metrics. Monitor your network's vitals and make on-the-fly adjustments as needed.

### Multi-Site Management

A single controller running in the cloud can manage multiple sites: multiple, distributed deployments and multi-tenancy for managed service providers. Each site is logically separated and has its own configuration, maps, statistics, guest portal, and administrator accounts.

### Deep Packet Inspection

Ubiquiti's proprietary Deep Packet Inspection (DPI) engine includes the latest application identification signatures to track which applications (and IP addresses) are using the most bandwidth.

### Detailed Analytics

The UniFi Network Controller provides configurable reporting and analytics to manage large user populations and expedite troubleshooting. Advanced search and sorting capabilities make network management more efficient.

### Software Features

The UniFi Network Controller software offers the following features for the UniFi Switch Flex Mini:

- Centralized configuration management (including configuration cloning)
- Auto-MDIX automatically adjusts as needed for straight through or crossover cable

### Switch Configuration

You can access the UniFi Switch Flex Mini through the UniFi Controller to configure a variety of features:

- Operation mode (switching or mirroring) per port
- Network/VLAN configuration\*
- Jumbo frame and flow control services
- Network settings
- Storm control setting per port

### Switch Port Status

You can also view status information for each port:

- Connection speed and duplex mode
- TX/RX data rates
- Network/VLAN setting\*

\* USW-Flex-Mini uses port-based VLANs only and does not support SSH, STP (forwarding only), 802.1X, DNS suffix, or experience in the controller.



USW-Flex-Mini	
Dimensions	107.16 x 70.15 x 21.17 mm (4.22 x 2.76 x 0.83")
Weight	150 g (5.29 oz)
Interfaces Networking PoE In Management	(5) 10/100/1000 RJ45 Ports 802.3af/at PoE (Pins 1, 2+; 3, 6-) Ethernet In-Band
Total Non-Blocking Throughput	5 Gbps
Switching Capacity	10 Gbps
Forwarding Rate	7.44 Mpps
Power Method	USB Type C, 5V 802.3af/at PoE (44 - 57VDC, 0.05 - 0.04A)
Power Supply	5V, 1A Power Adapter*
Voltage Range USB Type C 802.3af/at PoE	4.7 - 5.3V 44 - 57VDC
Max Power Consumption	2.5W
LEDs System RJ45 Data Ports	Status Speed/Link/Activity
ESD/EMP Protection	Air: ± 16 kV, Contact: ± 12 kV
Shock and Vibration	ETSI300-019-1.4 Standard
Operating Temperature	-5 to 45° C (23 to 113° F)
Operating Humidity	10 - 90% Noncondensing
Certifications	CE, FCC, IC

\* Included only with the single-pack of the USW-Flex-Mini

